



Bharti Institute of Public Policy

Information Handbook

ABOUT US

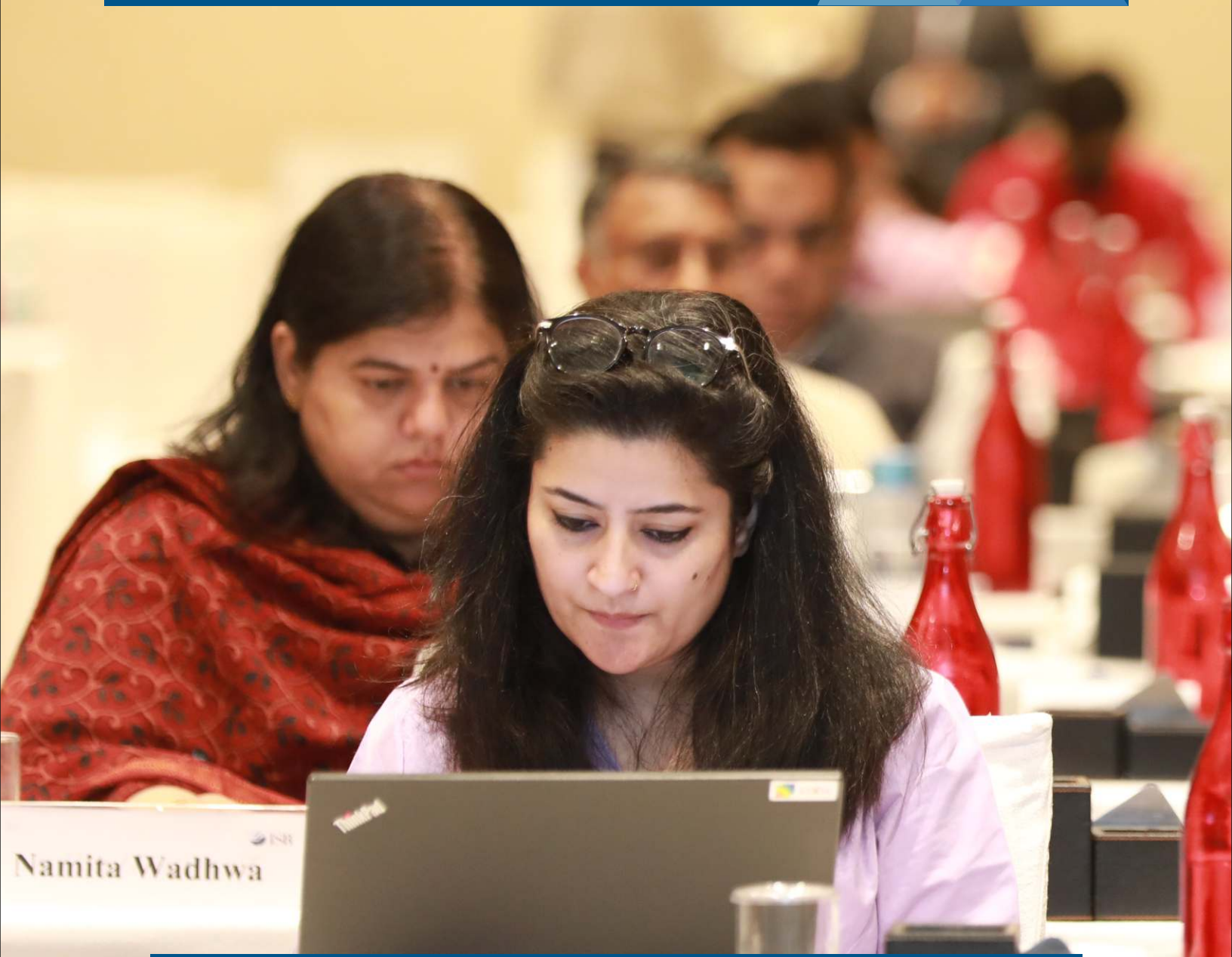
“

The Bharti Institute of Public Policy is a research centre at the Indian School of Business (ISB), promoting high-quality research to guide policy formulation and implementation. The Institute stands tall as one of India's eminent public policy think tanks, engaging with policymakers and practitioners, and providing them with critical, data-driven evidence, insights, and analysis of pressing concerns. The Institute works on policy challenges across diverse domains, ranging from agriculture and food, forest governance, environment, energy sector, education, financial sector, governance and digital identity, and post-pandemic policy innovation and leadership. Besides its several collaborations with state governments, and public and private entities to identify and address policy issues at international, national and regional level, the Institute has also undertaken noteworthy research and executive education initiatives to enrich the domain of public policy.

”



EDUCATION



ADVANCED MANAGEMENT PROGRAMME IN PUBLIC POLICY

The Advanced Management Programme in Public Policy (AMPPP), an year-long leadership development programme, is the flagship programme of Bharti Institute of Public Policy, and has been developed at the Indian School of Business in consultation with one of the world's leading public policy schools—The Fletcher School, Tufts University, USA. It has been designed in collaboration with the Department of Personnel and Training (DoPT), Government of India, to specifically address the needs of mid-career and senior-level professionals, and helps civil servants, corporate and social sector professionals, gain a wider understanding of issues which impact business and society; enhance their expertise in public policy, and helps them identify and work towards resolving policy issues across multiple domains.

Learning Goals and Key Takeaways:

LEARNING GOALS

Build Capabilities for Evidence-based Research in Public Policy Domain.

Develop Leadership and Teamwork Skills.

Acquire Effective Communication Skills.

Recognise Ethical Responsibility in the Public Policy Domain.

KEY TAKEAWAYS

Evidence in Public Policy; Public Policy Design, Analysis and Implementation; Financial Sector Regulation; Corporate Finance; Ethics in Public Policy; Gender and Development, Technology & Society, and Behavioural Insights for Policy.

CONCEPTS

Foreign Policy; Urban Governance; Agriculture and Food Policy; Energy and Environmental Policy; Public Private Partnership; Social Policy; Big Data for Public Policy; India's Economic Transformation, and Rural Development.

DOMAINS

Communication Skills; Leadership Development; Theory and Practice of Negotiations; Reading and Writing Analytically; Introduction to Data Analysis; Using Quantitative Methods, and Writing Case Studies.

SKILLS

Programme Format:

The AMPPP is a rigorous and challenging programme. It is designed as a 12-month, modular residential programme, delivered in a blended learning format with minimum disruption at work.

CLASSROOM LEARNING

Classroom learning is delivered through four residencies of nine days each, once every quarter. Each residency includes full days for classes and evenings for co-curricular engagements. Participants are required to stay on campus during these residencies.

TECHNOLOGY-ASSISTED LEARNING

The technology assisted component of the course is distributed over both pre-residency as well as post-residency. It is delivered via a combination of synchronous sessions, asynchronous modules, online quizzes, assignments, and other tools depending on the needs of that particular course and the preference of respective faculty.

LEARNING MATERIALS

Participants are expected to spend eight to ten hours per week studying reading material before classes commence each term. The reading material, including academic papers, book chapters, teaching cases, media articles, and videos, is made available to all participants in advance through the Learning Management System.

ASSIGNMENTS

The assignments are divided across pre-residency weeks, residency, and post-residency weeks. Individual assignments take the form of online and in-class quizzes, online discussion forums, policy memos and case studies, may be in the form of presentations, and policy analysis reports.



Three-Fold Learning Framework:

The course's unique design and pedagogy enable a three-fold learning framework, fetching insights from:

- **Faculty experts at ISB and renowned policy practitioners & formulators:** The faculty for the programme is drawn from a pool of highly accomplished resident faculty of ISB, faculty from The Fletcher School, and other leading schools besides eminent policymakers. Some of India's most distinguished leaders in public policy, governance, and business are invited to interact and speak during AMPPP residencies to share their experiences in specific sectors. In-depth communication, formal classroom sessions, and informal interactions with eminent policymakers, influencers of public policy, and subject matter experts, are blended into the course's pedagogy.
- **Policy Walk:** The unique AMPPP Policy Walks take participants through high-profile corridors of the National Capital, hosting a multitude of interactions with practitioners, formulators, and public policy influencers. As part of the three-day Policy Walk for the Co'2022, the participants got an opportunity to interact with Shri M. Venkaiah Naidu, the Hon'ble Vice President of India at his residence, besides attending several other key interactive sessions at the Ministry of External Affairs, NITI Aayog, NDRF Headquarters, with Cabinet Ministers, High Commissioners and Ambassadors of countries with strategic importance to India, and policy experts leading various government initiatives and programmes.



■ **Peers from diverse sectors and ISB alumni network:** The fellow participants bring diversity and depth of experiences spanning across multiple segments, infusing valuable variety, dynamism, and inclusiveness in the programme design. At ISB, the AMPPP cohort gets further connected to the vast alumni community across the School's coveted management and executive education programmes. The latest, AMPPP cohort Co' 23 consists of 38 participants including 20 from the public sector (three IAS, five IPS, four IRS, four Railway Services, two Telecom Service) and 18 from private sector (including one sitting MLA and participants from Developmental Sector). The cohort includes 32% women thereby adhering to the gender diversity norms. The image below shows the professional affiliations of the AMPPP Co' 23:

Class Profile: 2022-23



Professional Affiliations of AMPPP Cohort 2022-23



- **Experiential and research-driven andragogical learning:** Team-building activities, in-class projects, group discussions, simulation learning, role plays, case studies, and research poster presentations contribute to enhancing the understanding of complex issues and bringing to the forefront new perspectives. This is enriched through a modular design consisting of balanced pre-sessions, virtual and in-person engagements, guest lectures, and unique visits.

As a substantial research component of AMPPP, the Capstone project entails a rigorous analysis of a policy challenge or pressing issue in public policy. Independent desk research and knowledge acquired in the programme are applied in real-time. The report submitted at the end explores potential interventions to achieve specific objectives by applying concrete insights from the courses they were taught in the academic year.



LEGISLATIVE SUPPORT PROGRAMME

Bharti Institute offers a three-pronged approach to support legislators through interventions and evidence, through a Legislative Support Programme (LSP). The programme builds on the Institute's focus on evidence-based policies and its strength in capacity-building support to public policy leaders, government officials, private corporations, and the developmental sector. The three-pronged approach of LSP includes:

Legislative Research Fellowship:

The Institute selects public policy fellows to work with various government agencies/departments in a state to provide data-based insights. After a rigorous process, the selected candidates are trained to provide research support to legislators. Bharti Institute handles the responsibility of selecting, training, and mentoring the selected fellows. The State Legislative Research Fellowship involves providing extensive support to legislators for their legislative work in the form of research assistance, policy draft preparation, assistance in the legislative business-like questions, adjournment motions, calling attention notices, etc. The aim is to improve the quality of deliberations in the legislative assembly.

Government of Meghalaya:

Bharti Institute of Public Policy as a knowledge partner for the government of Meghalaya in collaboration with the Meghalaya Institute of Governance (MIG), initiated the Meghalaya Legislative Research Fellowship (MLRF). With an aim to advance its efforts for a research-driven policy formulation and implementation in the state of Meghalaya, the Institute facilitated its support for research and data analysis for the State Legislators, thus further empowering the Legislative Assembly. A total of 12 fellows have been working with all 60 members of the Legislative Assembly including the Hon'ble Chief Minister and Ministers of state. The fellows played a key role in the sessions of the Meghalaya Legislative Assembly. As part of their training in the first year, the fellows focused on learning quantitative and qualitative research techniques besides attending sessions on policy writing and legal issues. After successfully completing the first year of training from the Institute, the fellows along with the staff of Meghalaya Institute of Governance (MIG), visited remote villages across the state of Meghalaya for public consultation regarding the development of various tourism projects.



Legislative Leadership & Policy Workshop

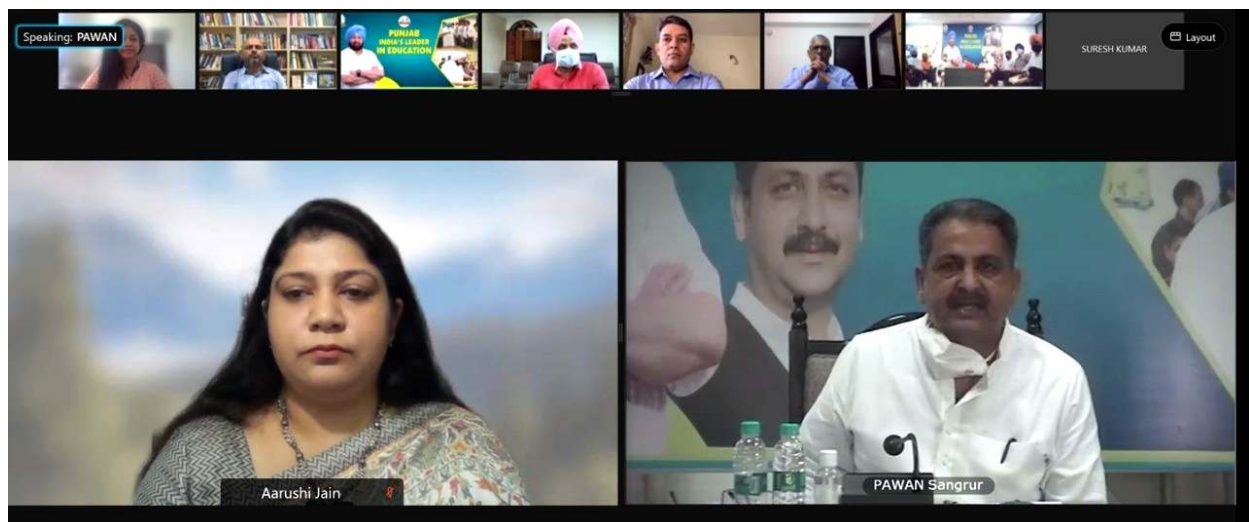
The Legislative Training involves a series of workshops designed and curated for the State Legislators based on the Training Need Assessment. The training modules are aimed to equip legislators to be more effective and influential in state and national policymaking. The modules leverage modern management principles and use innovative pedagogy to ensure effective teaching and learning. Simulation activities, case studies, group work, role plays, and similar interactive methodologies are used in training, and the sessions focus on public policy, economic and social development, leadership, strategy and innovation, climate change and sustainable development, digital transformation, and public finance, to mention a few. It provides an excellent opportunity for legislators to engage in discussions that strengthen the leadership skills of individual legislators while also reinforcing the legislature as an institution. During the programme, legislators delve into specific policy problems and choices, understand best practices across the globe, and how to make more effective and citizen-oriented policies. Most importantly, the training provides the legislators with immersive learning through field visits and interactions with other states' legislators, public policy professionals, and leading academicians.

EXECUTIVE TRAINING

Bharti Institute, in collaboration with various Central and State Government Departments, imparts executive training to senior officials.

E-Training Modules for Principals of Government Schools

Bharti Institute enrolled 10,000 principals, heads and teachers from government schools across the state of Punjab as part of its asynchronous e-learning module on “Leadership & Motivation for Effective School Management,” in collaboration with the Department of School Education, Punjab. The asynchronous course was launched by the Minister of Education, Punjab, in July 2021. In 2019-2020, the Institute also hosted in-person training programmes for over 1,000 principals and heads of schools in the state. The training modules equipped the participants with better leadership, motivation, and communication skills. Recently, Punjab was ranked among the top seven states for two years in a row as per the Performance Grading Index (PGI) report 2020-2021 released by the Union Ministry of Education.



Training of Officials of the Department of Water Resources

The Department of Water Resources, Punjab, has collaborated with Bharti Institute of Public Policy, for capacity building interventions for its senior officials to train them in the areas of Leadership, Ethics and Emerging Issues concerning Water Resources Management. The series of in-person workshops aim to equip government officials with contemporary management concepts and enhance their motivation and leadership skills, along with imparting research-driven knowledge on water management, security, and agri-water conflicts resolution. Three batches of senior officials from the department of water resources, government of Punjab have already been trained at ISB, Mohali, campus.



Open-Access Asynchronous Courses

Climate Change Primer for Journalists: A short-term asynchronous course to help journalists understand significant concepts and issues around climate change and global environment discourse was conceived and developed by Bharti Institute. The course, titled, Climate Change Primer for Journalists, was launched by the Member of Parliament Dr Jairam Ramesh and Andrew Fleming, British Deputy High Commissioner to Telangana and Andhra Pradesh, during a virtual event in October 2021. The self-paced course aims to equip media fraternity, environment researchers, and enthusiasts to comprehend the expanse and nuances of climate discourse from perspectives of public policy, socio-economic dynamics, science, politics, and sustainability.

IDP Course on Data and Visualisations: An asynchronous course on 'India Data Portal: Understanding Data and Visualisations' was launched at the Press Club of India, New Delhi, in December 2021. The course, comprising of five modules and about an hour-long audio-visual content, is hosted on a learning management system to familiarise journalists, academicians, researchers, and data enthusiasts with India Data Portal, to increase the scope and feasibility of training and improve user engagements.



RESEARCH PROJECTS & COLLABORATIONS

CURRENT ENGAGEMENTS WITH STATE GOVERNMENTS



Government of Odisha

Bharti Institute, ISB and the Government of Odisha inked a collaboration for women empowerment & rural prosperity through a sustainable forest economy. Under this MoU, ISB and the Department of Mission Shakti, Government of Odisha will work jointly to build a prosperous and sustainable forest economy in Odisha through women-led enterprises. The collaboration will initially focus on women-led enterprises from six districts i.e., Malkangiri, Koraput, Nabrangpur, Rayagada, Mayurbhanj and Kendujhar, and is expected to benefit nearly 20 Lakh women across the six districts in a span of three years.



Government of Jharkhand

Bharti Institute has been collaborating with the Jharkhand Government for two ambitious policy interventions: The Initiative on Forest Economy (explained later in the document) and the Safe and Responsible Migration Initiative (SRMI), helping the government with data-driven technologies to address migration issues, and devising policy frameworks for improving migrant lives.



Government of Punjab

In diverse collaborations with the Punjab government, Bharti Institute works with the Departments of Finance, School Education, Drinking Water and Sanitation, and the Department of Water Resources, under various initiatives on capacity building, leadership, besides developing training modules for its officials.



Government of Himachal Pradesh

Bharti Institute in collaboration with the state government is instrumental in regularising the forest economy in the hill state through securing tenure rights for indigenous communities and establishing market linkages for industrial procurement of Seasonal Forest Products (SFPs). This also includes empowering local communities, especially women, through technology and building sustainable industrial value chains.



ENGAGEMENTS WITH STATE GOVERNMENTS UNDER

JumpStartIndia@ISB INITIATIVE

Government Engagements under JSI



COLLABORATIONS WITH CENTRE - DEPARTMENTS, AGENCIES, INSTITUTIONS



Ministry of Agriculture and Farmers Welfare:

Supporting agriculture-nutrition convergence towards improving nutrition outcomes amongst low-income households, the Ministry of Agriculture and Farmers Welfare has collaborated with ISB-led consortium to strengthen agriculture-nutrition convergence. Indian School of Business, University of Sheffield and London School of Hygiene & Tropical Medicine will anchor this collaboration to further augment government efforts in improving nutrition outcomes, agriculture-nutrition convergence and establishing an institutional mechanism to identify convergence opportunities at both central and state levels. ISB will have a designated office space at the Ministry of Agriculture and Farmers Welfare, New Delhi to monitor the progress.



NITI Aayog:

Engaging with Development, Monitoring, and Evaluation Office, NITI Aayog, on various fronts, Bharti Institute has developed hybrid courses for mid and senior-level civil servants and works on research projects, engaging with thought leaders and data experts to enhance capacity building frameworks.



Department of Personnel and Training (DoPT):

Bharti Institute has collaborated with DoPT to train senior-level public service officials through its flagship and distinguished Advanced Management Programme in Public Policy, an year-long leadership development programme for civil servants in India.



Lal Bahadur Shastri National Academy of Administration (LBSNAA):

As a knowledge partner in association with Lal Bahadur Shastri National Academy of Administration, Bharti Institute anchors the process of coordination on various Officer Trainee (OT) led reports in consultation with ISB and LBSNAA faculty and experts. Under the 'Central Schemes Impact-Assessment' collaboration, Bharti Institute in September 2022, submitted 36 detailed evaluation reports to Lal Bahadur Shastri National Academy of Administration (LBSNAA), along with corresponding executive summary reports for the selected schemes.



Registrar General of India:

A Census Data Research Workstation has been set up on the Institute's premises at ISB Mohali campus in collaboration with Directorate of Census Operations, Punjab and Chandigarh. The workstation facilitates research on anonymised aggregate data at various administrative levels, from Census 2001, 2011 and onwards, and is maintained by Bharti Institute.

COLLABORATIONS WITH CENTRE - DEPARTMENTS, AGENCIES, INSTITUTIONS



Quality Council of India (QCI):

Bharti Institute is assisting the national accreditation body of India (QCI) in planning, data collection, compilation, and in-depth analysis for the execution of its projects, including governance framework and process, outreach efforts, and user activity.



Environment Protection and Training Research Institute (EPTRI):

Bharti Institute is helping the EPTRI develop core competency and reputation in three key sectors— Environmental Impact Assessment, Waste Management, and Climate Change.



National Institute of Urban Affairs and World Resources Institute:

Under this collaboration, 'Leaders in Climate Change Management Programme' has been launched, which also includes United Nations Environment Programme as a partner. It seeks to build a pool of 4000 – 5000 climate leaders across India, over a period of five years. The Institute will be handholding six core modules of the programme in the form of asynchronous courses.



RESEARCH GRANTS & INITIATIVES

India Data Portal

Donor - Bill and Melinda Gates Foundation



The IDP project awarded by BMGF, is a one-stop open-access portal for journalists to access, interact with, and visualise information and data. The [India Data Portal](#) covers 28 states, eight Union Territories, 720 districts, 48 types of visualisations, in six languages—English, Hindi, Bengali, Marathi, Odia and Telugu.



Institutional Networks & Self Organised Adaptation: Tracing Democratic Architectures of Climate Response

Donor - Swedish Research Council



Swedish
Research
Council

This project has been awarded by the Swedish Research Council and looks at how democratic political systems, comprising of multiple actors and institutions, shape local responses to climate risk and change in vulnerable populations in the rural Himalayan region in India and Nepal.

Upscaling Community Forest Resource (CFR) Rights Recognition & Governance in India

Donor - The International Land and Tenure Facility



The Tenure Facility (TF) project is a multi-objective initiative that aims at upscaling Community Tenure and Jurisdiction for tribal and forest dwellers in India. The initiative aims to establish a prosperous and sustainable forest economy anchored in a secure tenure. This vision will transform the livelihoods of over 200 million forest-dependent citizens through sustainable management, conservation, and regeneration of the forest landscapes of the country. The model is being incubated through large-scale pilots in Odisha, Jharkhand, and Himachal Pradesh under the Initiative on Forest Economy (IoFE). The pilots include collaborative support from multiple government departments in each state, convergence of different policies and schemes, mobilisation of communities and women at the grassroots level, and partnership with industry for formal and direct procurement of forest-based industrial raw material. Know more at <https://forestgovernance.in>



Markets & Convergence for Nutrition in India Donor - Bill and Melinda Gates Foundation

To enable durable improvements in nutrition outcomes, Bharti Institute, in partnership with a consortium of government agencies, research institutions, and civil society organisations, initiated the Technical Assistance Facility (TAF) and Policy Support Research Facility to support the Government of India and Bihar & Odisha Governments in particular to improve nutrition outcomes amongst low-income consumers in underserved geographies. The two facilities will work with and support the central and state governments in implementing the agriculture-nutrition convergence agenda through a combination of policy, markets, and technology. The Technical Assistance Facility is led by ISB-BIPP, with its implementation partners as MicroSave Consulting, Collectives for Integrated Livelihood Initiatives (CInI, TATA Trusts) and Policy Development and Advisory Group (PDAG). The Research Facility is led by The University of Sheffield along with London School of Hygiene and Tropical Medicine (LSHTM) and ISB-BIPP, in addition to two key national research institutes – National Institute of Nutrition (ICMR-NIN) and the National Institute for Agricultural Economics and Policy Research (ICAR-NIAP).

Climate-smart agriculture: Learning from high-performing farming systems DBT & Dutch Research Council



The Department of Biotechnology (DBT), Ministry of Science and Technology, Government of India, awarded a grant to Bharti Institute for exploring 'Bright Spots of Climate Smart Agriculture—learning from high-performing farming systems (BrightSpotsCSA)'. This research is a part of a scientific collaboration between India and Netherlands and will focus on research contributing to application-oriented solutions for mitigating the effects of climate change on agriculture and providing sufficient, healthy food in a sustainable way for vast population.





ENGAGEMENTS WITH PRIVATE ENTITIES

Environmental Defense Fund



The Environmental Defense Fund, USA, has collaborated with Bharti Institute, to explore the opportunity landscape for climate technology in India. As part of the synergy, the Institute will conduct a landscape review of the state of investments and adoption of climate technology in India, and will also help EDF analyse industry-academia linkages for co-creating scalable solutions for climate technology.

IndiaSpend



The team of India Data Portal, Bharti Institute of Public Policy, developed an online course on 'Better Reporting on Food and Agriculture' in collaboration with IndiaSpend, media portal dedicated to data journalism. The course is aimed at improving discourse on food and agriculture, and helping experts navigate through IDP.

Collectives for Integrated Livelihood Initiatives (CiNi) - Tata Trusts



In collaboration with CiNi, Bharti Institute has been documenting the initiative Lakhpati Kisan which engages with 1,00,000+ households across 4 states to bring economic empowerment in Central Indian tribal belt. The documentation focuses on the process of meeting the aspirations of small & marginal farmers with increased income by understanding the ingredients, process and challenges involved.

Hindustan Unilever (HUL)



Bharti Institute will work with HUL and its implementation partners (American India Foundation and SHARP) as an external evaluator to bring rigour to the analysis of the data being collected under the Prabhat Poshan Saathi project, through adjustments in research design and the use of advanced statistical methods. The programme focuses on women's health, supplementing Central government's efforts under the POSHAN Abhiyan, and is being implemented in 6 districts across 5 states and expansion is planned for another five districts in additional states.

Recent Research Publications

Prof Ashwini Chhatre

- Co-authored the paper, 'Rural Institutions, Social Networks, and Self-organized Adaptation to Climate Change,' published in the 'Environmental Research Letters' journal.
- Co-authored the research paper, 'A systems lens to evaluate the compound human health impacts of anthropogenic activities,' which was published in the journal 'One Earth'.
- Co-authored the paper 'Dark and bright spots in the shadow of the pandemic: Rural livelihoods, social vulnerability, and local governance in India and Nepal' published in the World Development Journal.

Dr Aarushi Jain

- Co-authored a book on 'Cyber Laws and Cyber Crime'.

Prof Anjal Prakash

- Co-authored the research paper 'A climate resilience research renewal agenda: learning lessons from the COVID-19 pandemic for urban climate resilience,' published in Climate and Development journal.
- Contributed to the Technical Summary, Chapter on 'Cities, Settlements and Key Infrastructure.' Cross-Chapter Paper 5 on 'Mountains' of the 'Climate Change 2022: Impacts, Adaptation, and Vulnerability: Contribution of Working Group II to the Sixth Assessment Report of the Intergovernmental Panel on Climate Change,' released on February 28, 2022.
- Co-authored study 'Climate Adaptation Interventions in Coastal Areas: A Rapid Review of Social and Gendered Dimensions' was published in Frontiers in Climate.
- Co-authored the paper titled 'Survey of Gender Bias in the IPCC,' which was published in the Nature journal.

Dr Sridhar Kundu

- Co-authored working paper 'Fiscal policies and their impact on income distribution in India' was published as the Commitment to Equity Institute Report – India by Tulane University in May 2022.
- Published a book chapter on "Public spending priorities for Indian Agriculture and Allied Sector", Edited Vol-Distress in the fields: Indian Agriculture after Economic Liberalisation, by R Ramakumar, Ch-5, Tulika Books Publication, 2022.

Dr Sharique Hassan Manazir

- Published research paper in Elsevier's Social Science Research Network, titled 'Revisiting Marx and Schumpeter on Technology: A Comparative Analysis.'
- Published research paper in Elsevier's Social Science Research Network, titled 'Personal Data & Digital Democracy Regime: A Critical Analysis of Proposed Policies in India.'

Nikhat Khalid

- Published research paper titled "India and Mekong-Ganga Cooperation: Emerging Trade Linkages" in The Indian Economic Journal (SAGE Publications) in January 2022.
- Published research paper titled "The dynamics of India – ASEAN trade with special reference to manufactured exports and their technological composition" in Theoretical and Applied Economics / Economie teoretică și aplicată (ECTAP), in April 2022.
- Published research paper titled "India and Singapore Trade through the Lens of Technological Aspect: An Empirical Analysis" in Journal of International Economics in November 2022.
- Published research paper titled "Restructuring India's Merchandise Trade Post COVID-19: Challenges and Opportunities", in book titled Resilience and Transformation for Global Restructuring, Ethics International Press, Cambridge, U.K., September 2022.

Pranav Prakhyat Garimella

- Research paper titled 'Planned relocation: An unusual case for developed countries' was published in Current Research in Environmental Sustainability.



CONTACT US

HYDERABAD CAMPUS

Indian School of Business Gachibowli,
Hyderabad, Telangana - 500 111
Ph +91 40 2300 7000

MOHALI CAMPUS

Knowledge City, Sector 81, SAS Nagar,
Mohali, Punjab - 140 306
Ph +91 172 459 0000

EMAIL US bharti_institute@isb.edu

FOLLOW US ON    

