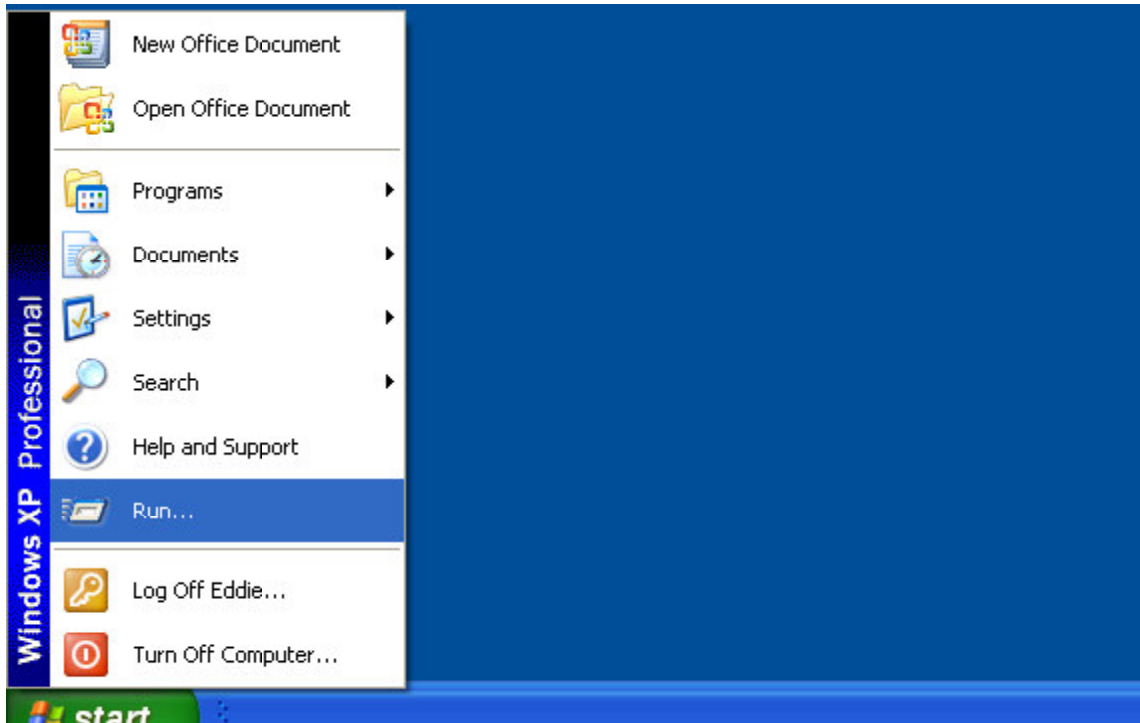


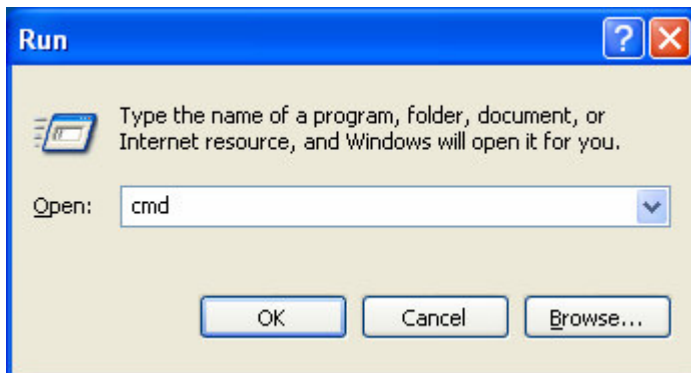
Procedure to Find a MAC Address in Windows XP

Below is the procedure you need to follow to get the Hardware (Ethernet) MAC address from your laptop.

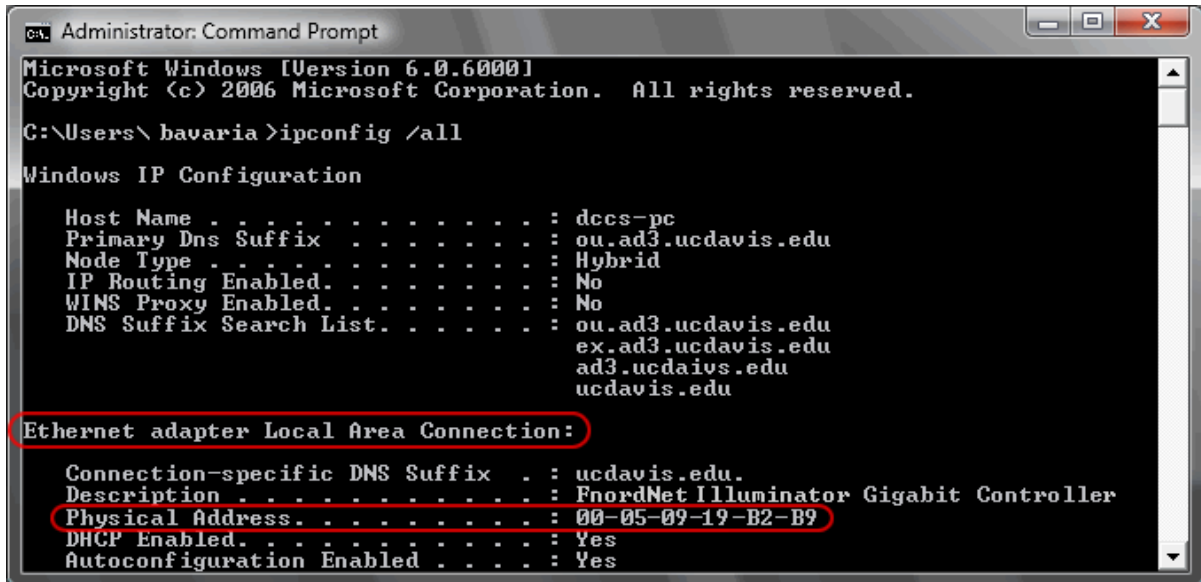
Step 1: Click on your **START** menu and select **RUN**



Step 2: Type **CMD** in the following window and click on the **OK** button.



Step 3: Type **ipconfig /all** in the following window and press **Enter**.



```
Administrator: Command Prompt
Microsoft Windows [Version 6.0.6000]
Copyright (c) 2006 Microsoft Corporation. All rights reserved.

C:\Users\bavaria>ipconfig /all

Windows IP Configuration

Host Name . . . . . : dccc-pc
Primary Dns Suffix . . . . . : ou.ad3.ucdavis.edu
Node Type . . . . . : Hybrid
IP Routing Enabled. . . . . : No
WINS Proxy Enabled. . . . . : No
DNS Suffix Search List. . . . . : ou.ad3.ucdavis.edu
                                     ex.ad3.ucdavis.edu
                                     ad3.ucdavis.edu
                                     ucdavis.edu

Ethernet adapter Local Area Connection:

    Connection-specific DNS Suffix . : ucdavis.edu.
    Description . . . . . : FnordNet Illuminator Gigabit Controller
    Physical Address. . . . . : 00-05-09-19-B2-B9
    DHCP Enabled. . . . . : Yes
    Autoconfiguration Enabled . . . . : Yes
```

Once you have located this section, look for the line labelled **Physical Address**. This will list your 12-digit hexadecimal Hardware Ethernet Address, also known as a MAC (Media Access Control) or Ethernet address. Write this address down; and submit the same to IT Department who will help in registering your laptop onto ISB's Network

Step 4: Type **exit** to close the command window