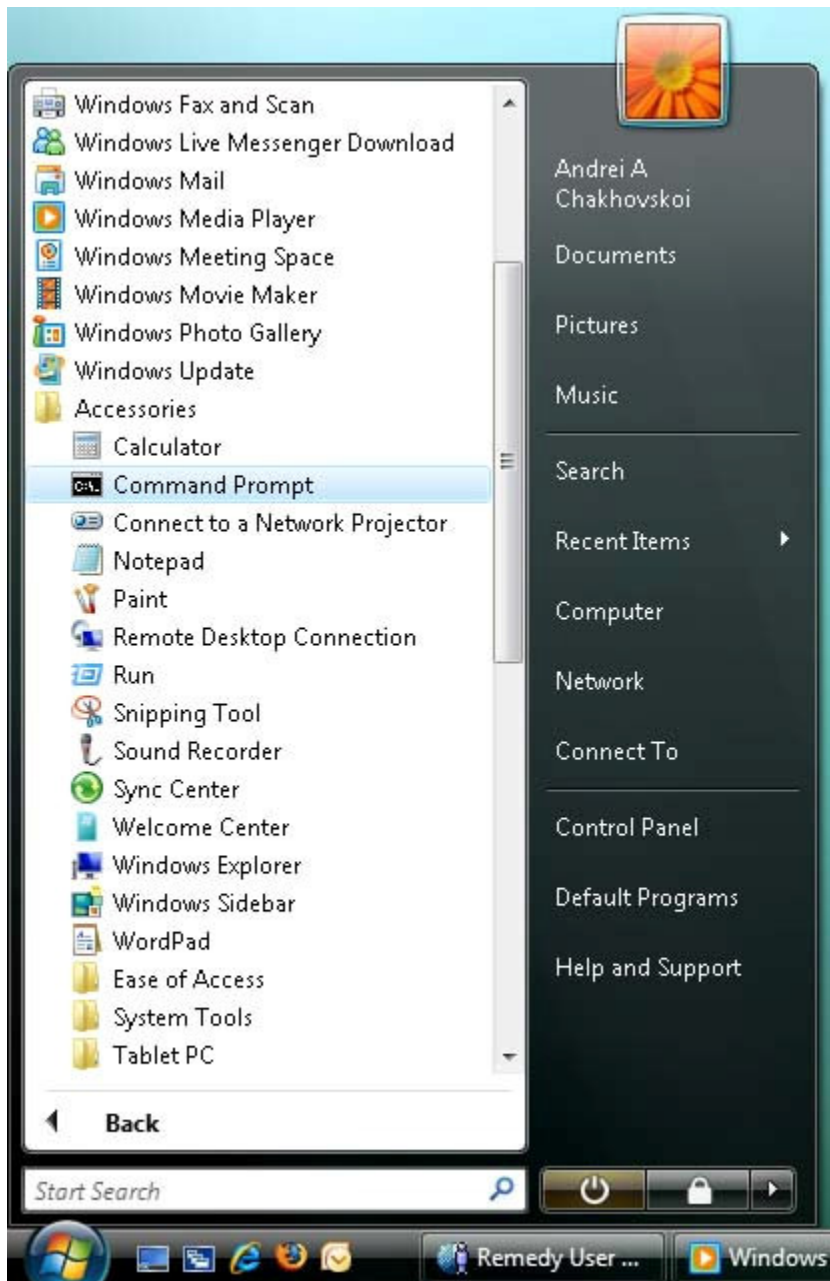



Procedure to Find Ethernet Address in Windows Vista

Below is the procedure you need to follow to get the Hardware (Ethernet) MAC address from your laptop.

Step 1: Click on your **START** menu and select **Command Prompt**



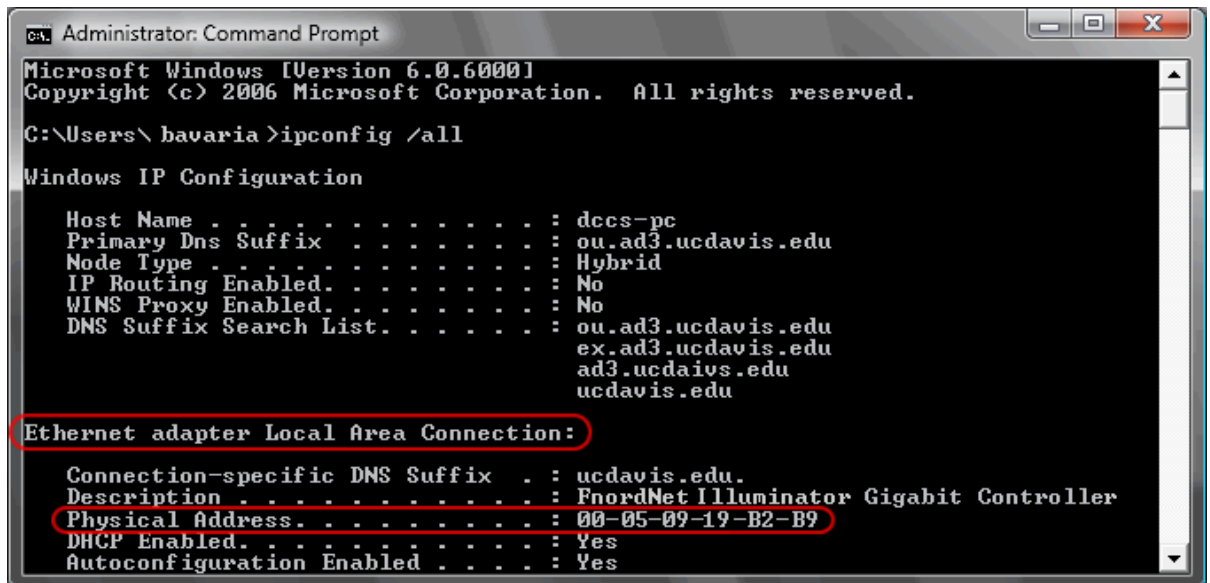
Step 2: Type `ipconfig /all` in the following window and press Enter.



```
Administrator: Command Prompt
Microsoft Windows [Version 6.0.6000]
Copyright (c) 2006 Microsoft Corporation. All rights reserved.

C:\Users\xen0cide>ipconfig /all
```

Step 3: Information about your installed network adapters will appear. Scroll up through the results until you locate the section labelled **Ethernet Adapter Local Area Connection**.



```
Administrator: Command Prompt
Microsoft Windows [Version 6.0.6000]
Copyright (c) 2006 Microsoft Corporation. All rights reserved.

C:\Users\bavaria>ipconfig /all

Windows IP Configuration

Host Name . . . . . : dccc-pc
Primary Dns Suffix . . . . . : ou.ad3.ucdavis.edu
Node Type . . . . . : Hybrid
IP Routing Enabled. . . . . : No
WINS Proxy Enabled. . . . . : No
DNS Suffix Search List. . . . . : ou.ad3.ucdavis.edu
                                     ex.ad3.ucdavis.edu
                                     ad3.ucdavis.edu
                                     ucdavis.edu

Ethernet adapter Local Area Connection:

Connection-specific DNS Suffix . : ucdavis.edu.
Description . . . . . : FnordNet Illuminator Gigabit Controller
Physical Address. . . . . : 00-05-09-19-B2-B9
DHCP Enabled. . . . . : Yes
Autoconfiguration Enabled . . . . : Yes
```

Once you have located this section, look for the line labelled **Physical Address**. This will list your 12-digit hexadecimal Hardware Ethernet Address, also known as a MAC (Media Access Control) or Ethernet address. Write this address down; and submit the same to IT Department who will help in registering your laptop onto ISB's Network

Step 3: Type `exit` to close the command window