

News monitored for: ISB

Business Standard

ISB mulls new courses on manufacturing

BS REPORTER

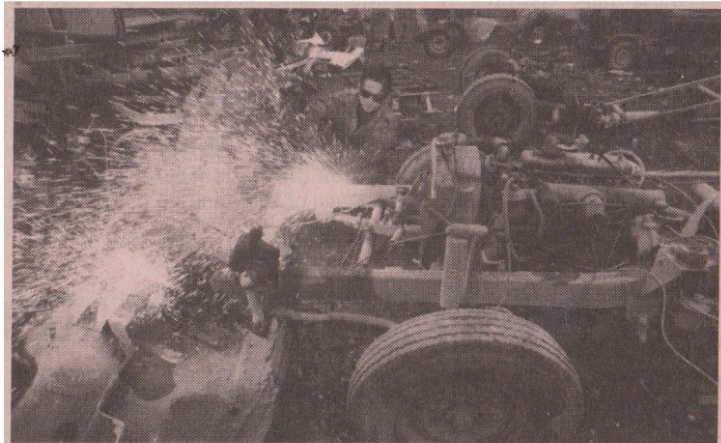
Hyderabad, 9 December

The Munjal Global Manufacturing Institute (MGMI), one of the four independent academic institutions set up at the Indian School of Business (ISB)'s Mohali campus, is looking at running executive, post-graduate and doctoral programmes in manufacturing.

MGMI, aimed at operational excellence and innovation in the manufacturing ecosystem, is supported and sponsored by Hero MotoCorp and the Munjal family. The Munjals have invested Rs 50 crore in the institute.

"As we merge ourselves with the global economy, we need to become globally competitive. Not just increasing manufacturing, but we need to focus on new ideas, technologies, research and innovation. The institute will attempt to focus on all of these and over a period of time there are many programmes that will get developed," said SK Munjal, chairman of Hero MotoCorp.

The admission process at the Mohali campus is already on and will have a student intake of 210 in the first batch, Munjal told media-persons at Swavalamban-II, a seminar on 'Strengthening manufacturing in India through defence offsets' organised by ISB here on Friday.



The Munjal Global Manufacturing Institute will attempt focus on new ideas, technologies, research and innovation and will develop many programmes over a period of time

Slated to become operational in April 2012, the ISB campus at Mohali will have four specialist institutes, termed as centres of excellence – Max India Institute of Healthcare Management, Bharti Institute of Public Policy, BMI. Munjal Manufacturing Institute and Punj Lloyd Institute of Physical Infrastructure Management – for promoting research and offering

additional specialisations.

According to Savita Mahajan, deputy dean and chief executive, Mohali campus, the criteria (3-5 years of work experience) and selection procedures are similar to the Hyderabad campus.

"In the first year, what we will be offering students at Mohali is the same one-year PG programme as offered here in Hyderabad with additional specialisation in healthcare, infrastructure, public policy and manufacturing. We may do it (additional programmes) as we go along," she said, adding students from Mohali and Hyderabad campuses can align themselves with any of these four electives.